

# TRU-Direct Primary Care



Our Direct Primary Care (DPC) membership is **nationwide** and provides unlimited in-office and virtual primary medical care to **everyone**. Within our membership, we navigate members towards appropriate care and contain out-of-pocket medical expenses for employers.<sup>1</sup>

## WHAT'S INCLUDED

Patient Advocacy . . . . .	\$0
Unlimited In-office Physician Access . . . . .	\$10
Preventative Care . . . . .	\$10
Unlimited Chronic Care . . . . .	\$10
Unlimited Urgent Care . . . . .	\$25
Unlimited Virtual DPC . . . . .	\$0
800+ Commonly Prescribed Medications . . . . .	\$0
Discounted Lab Services . . . . .	Discounted
Dental, Vision, and Chiropractic . . . . .	Discounted
Discount Marketplace Everyday Savings . . . . .	Discounted

Member Only . . . . .	<b>\$105</b>
Member + Spouse . . . . .	<b>\$185</b>
Member + Child . . . . .	<b>\$280</b>
Member + Family . . . . .	<b>\$380</b>

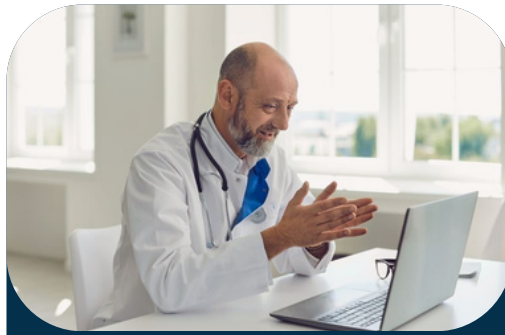
## WHAT IT COSTS





### Patient Advocacy

Patient Advocates navigate members through the healthcare system. Members call and are guided through options toward the most affordable and convenient choice. The patient concierge service can even schedule appointments.



### In-office Physician Access

Unlimited in-office visits with board-certified physicians for \$10 per DPC visit and unlimited virtual visits for \$0 per visit - all designed so that members can see a doctor in-person or virtually when needed.<sup>2</sup>

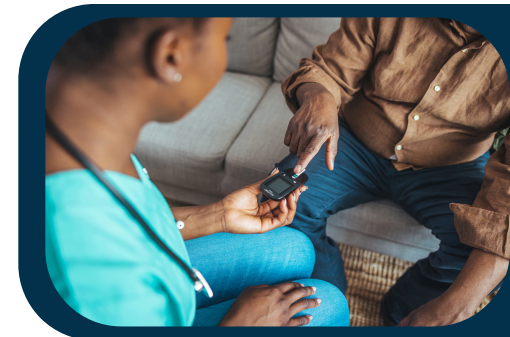


### Preventative Care

The membership provides an annual physical with basic lab work. This service also helps establish a relationship between the member and the physician, encouraging an honest conversation about concerns, health, and wellness.<sup>3</sup>

## Unlimited Chronic Care

Unlimited physician visits are not only for everyday care or acute conditions. The clinics also detect, treat, and manage 13 of the most prevalent chronic conditions. Through unlimited chronic care access, members can minimize out-of-pocket expenses for those conditions that are within a manageable state for \$10 per visit.<sup>4</sup>



## Unlimited Urgent Care

Unlimited appointments for conditions that require elevated care beyond what is traditionally offered in a primary care physician's office, or if after hours care is needed. Patient Advocates can schedule an appointment through one of our urgent care partners nationwide for \$25 per Urgent Care Visit.



## Unlimited Virtual DPC

Unlimited Virtual DPC access 24/7/365 to bilingual board-certified physicians for \$0 out-of-pocket. These physicians are ready to assist with appropriate acute concerns, prescription refills, doctor notes for work, and more.



THIS BENEFIT IS NOT INSURANCE OF ANY KIND. PLEASE SEE THE IMPORTANT DISCLAIMERS AND NOTICES AT THE END OF THIS BROCHURE.





## Free Prescriptions for Everyone!

Through TRU-Rx, you have access to the most common generic medications for FREE!<sup>5</sup>



- **Top 125+ Most Used Acute Medications!**
  - Don't wait to feel better. Pick up your prescription at a local pharmacy. Get up to a 21-day supply of the most commonly prescribed acute meds for a cold, the flu, infections, for **FREE!**
- **Top 90% Utilized Chronic Medications! Home Delivery Maintenance Medications for Chronic conditions!**
  - Maintenance medications prescribed for chronic, long-term conditions like high blood pressure, high cholesterol, diabetes, etc., are taken regularly, and often come with a high-cost. With TRU-Rx, you have access to chronic meds for **FREE!**
- **Lower Prices than Pharmacies and Major Retailers.**
  - Through our relationships and buying power. TRU-Rx offers common generic OTC medications, like ibuprofen (Advil), Acetaminophen (Tylenol), Fexofenadine (Allegra), Diphenhydramine (Benadryl) and others at a fraction of the price.
- **SaveOn Diabetes**
  - TRU-Rx's SaveOn Diabetes Program offers diabetic patients a FREE meter, low-cost testing strips, lancets and more.
- **Pharmacy Coaching**
  - My TRU-Rx is looking out for you. Our experienced team of customer service agents and Licensed Pharmacists provide the highest level of care when members need it most. Through Pharmacy Coaching, we educate members on possible medication options and opportunities to save additional money when available. We will consult with you and your doctor to inform you of the alternatives and help make the best decision for your personal and financial help.



## Nationwide Lab Tests

Nationwide Lab tests with over 2,200+ approved testing centers through Grassroots Labs.<sup>6</sup>

Discounts on most basic lab work, including a complete metabolic panel, complete blood count, and a lipid panel.



## TRU-Discount Marketplace

Savings of up to \$4,900 per year with great deals across travel, tickets, electronics & many more categories!

TRU-Discount Marketplace negotiates the best discounts on the market for you and many of the offers include additional cash back to make it the best overall value to you. Not only saving you money, but time and hassle, too.



## Health Savings with WellCard

WellCard Savings gives you and your family access to pre-negotiated discounts on prescription drugs and a wide range of health care services including a 24/7 vet, up to 60% off MRI and imaging services, a medical bill advocate, and much more!



## Health Wallet

HealthWallet provides membership details at your fingertips and houses your digital ID cards.

Concierge services available with one click.

Access all your services in one convenient location.



This is NOT insurance. This is not Minimum Essential Coverage. This is a noninsurance program sold as a subscription service. This subscription does not provide reimbursement for any medical expenses.

Offered by TRU Health Group or its affiliates.

Direct Primary Care (DPC) coverage offered by Healthcare2U.™

1. Healthcare2U's Direct Primary Care (DPC) is a healthcare membership. DPC is not insurance and does not satisfy ACA minimum essential coverage. Individuals ages 2 to 65 are eligible for Healthcare2U's DPC membership, Dependents under the age of two are not eligible to enroll for Healthcare2U. Dependent children are eligible for membership until the last day of their 25th year. Individuals are eligible for membership until the last day of their 64th year.

2. No walk-ins allowed. Unlimited services must be accessed through Healthcare2U's Patient Advocacy Line (PAL) and all care is provided through our physician network. In-office appointments are only available within business hours (Monday through Friday, 7 AM to 6 PM CST). Applicable visit fees apply. Depending on membership type, the annual physical may only be accessible after six consecutive months of membership.

3. Annual physical includes four labs: complete metabolic panel (CMP), complete blood count (CBC), thyroid stimulating hormone (TSH) and lipid panel.

Not all labs that can be prescribed are included in this program. Provider collection and handling fees may apply, and are subject to health benefit plan provisions, if any.

4. Included in the 13 most prevalent chronic conditions are Anxiety, Arthritis, Asthma, Blood Pressure, Fibromyalgia, GERD, Gout, Hypertension, Thyroid, CHF, COPD, Depression, Diabetes.

5. Rx services provided by America's Pharmacy Source. For full federal and state notices and disclaimers, please visit <https://americaspharmacysource.com/terms-and-conditions/>

6. Lab services provided by Grassroots Labs. For full federal and state notices and disclaimers, please visit <https://www.grassrootslabs.com/>

The TRU Health Group name, logo, and other marks are owned by Crown Administrators, Inc., d/b/a Health Admins. All other company names, logos, and other marks are owned by their respective companies.

